

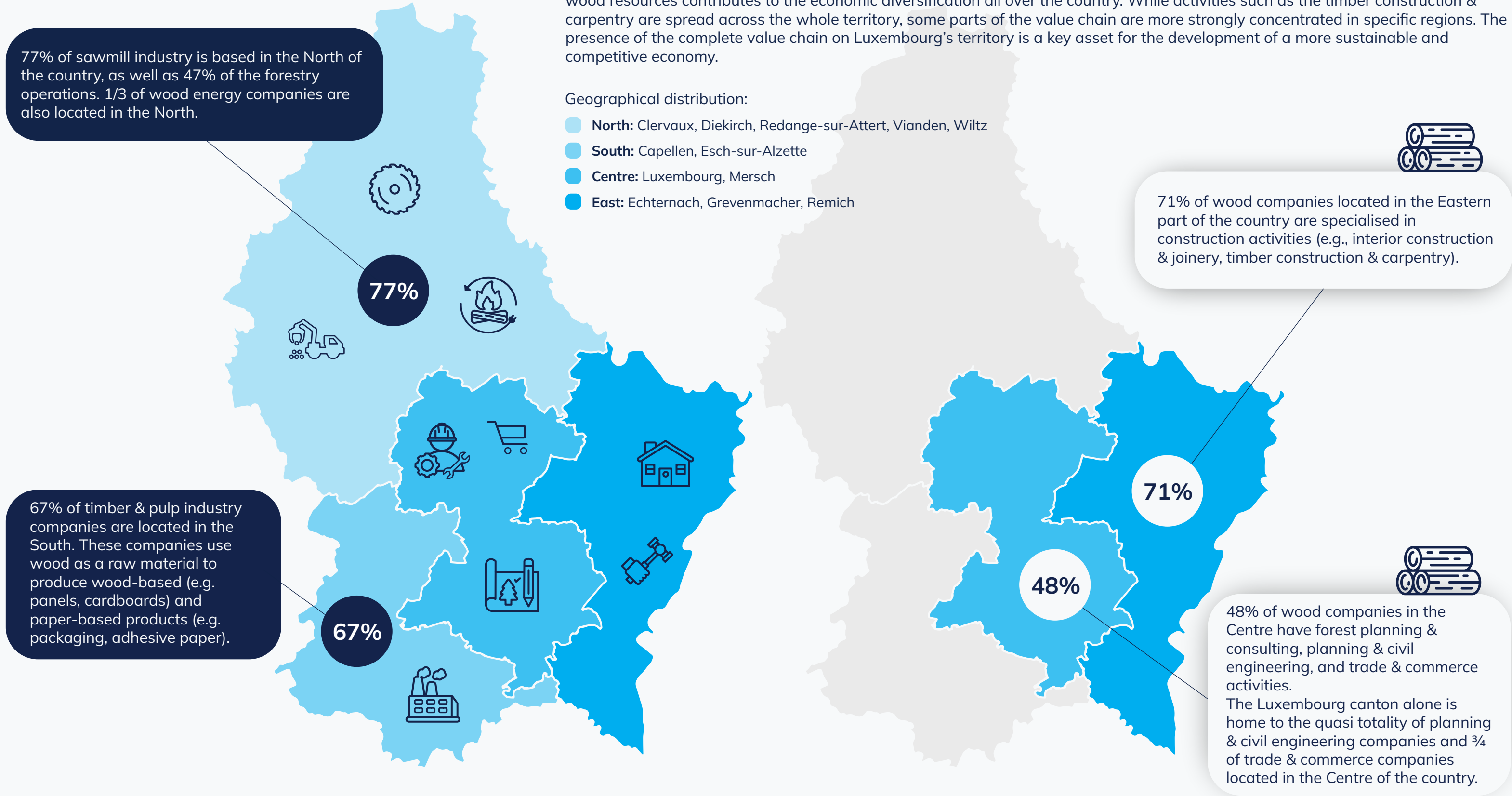
LUXEMBOURG WOOD VALUE CHAIN

The Wood Value Chain: A key for the economic diversification of Luxembourg

The Luxinnovation mapping of the wood value chain in Luxembourg lists a total of 1,519 companies. The wood sector and its value chain provide an important contribution to the economic activity of the country, all while fostering sustainability and the use of local resources. The wide geographical distribution of the wood supply chain companies shows that the valorisation and exploitation of the wood resources contributes to the economic diversification all over the country. While activities such as the timber construction & carpentry are spread across the whole territory, some parts of the value chain are more strongly concentrated in specific regions. The presence of the complete value chain on Luxembourg's territory is a key asset for the development of a more sustainable and competitive economy.

Parts of the value chain:

- 1  Forest planning & consulting
- 2  Forestry operations
- 3  Sawmill industry
- 4  Timber & pulp industry
- 5  Wood energy
- 6  Planning & civil engineering
- 7  Timber construction & carpentry
- 8  Interior construction & joinery
- 9  Trade & commerce



Source: Luxinnovation Wood Value Chain Mapping